

OFFICE / WAREHOUSE

BIZ PARK 29

3801, 3871, 3883, 3887 E UNIVERSITY GEORGETOWN, TX



BIZ PARK 29
A Premier
Office/Warehouse
Facility Located
Conveniently near
I30 & FM29 Less Than 2
Miles from IH35

GEORGETOWN

- Grade High & Dock Level Doors
- HVAC Office Space
- 16-20' Ceiling Height
- 1500 – 8300 SF Available
- 1 clock from Confluence of I30 & FM 29
- Within Minutes of IH 35 & Downtown Georgetown

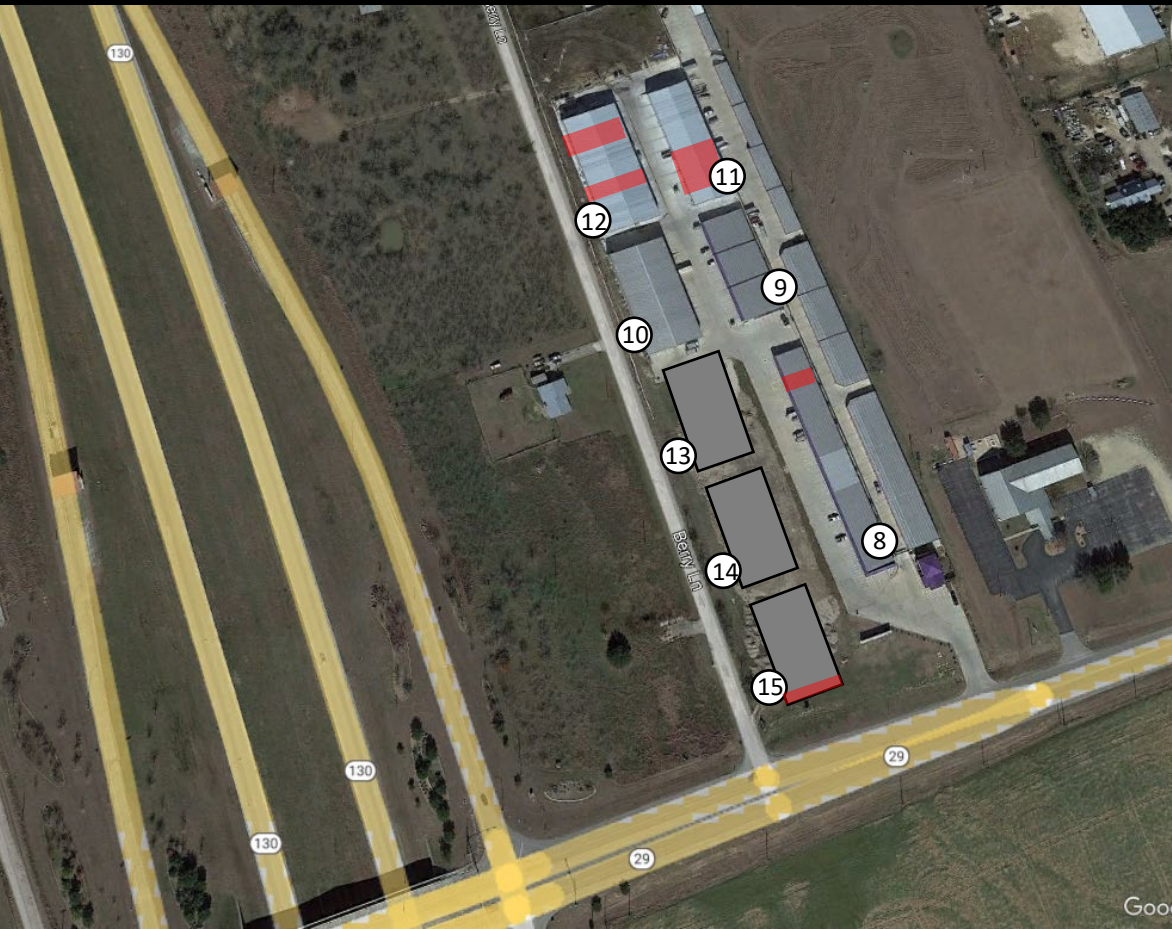
Tawney Stedman
Capella Commercial, LLC
tawney@capellatx.com



CAPELLA COMMERCIAL LLC

The information contained herein was obtained from sources deemed reliable; however, no guarantees, warranties or representations as to the completeness or accuracy thereof. The presentation of this real estate information is subject to errors; omissions; change of price; prior sale or lease; or withdrawal without notice.

BIZ PARK 29, GEORGETOWN, TX



Building 8 | 3871 | 1820 SF Available | 100% HVAC

Building 11 | 3883 | 1500 SF Available (contiguous with 8300 SF)

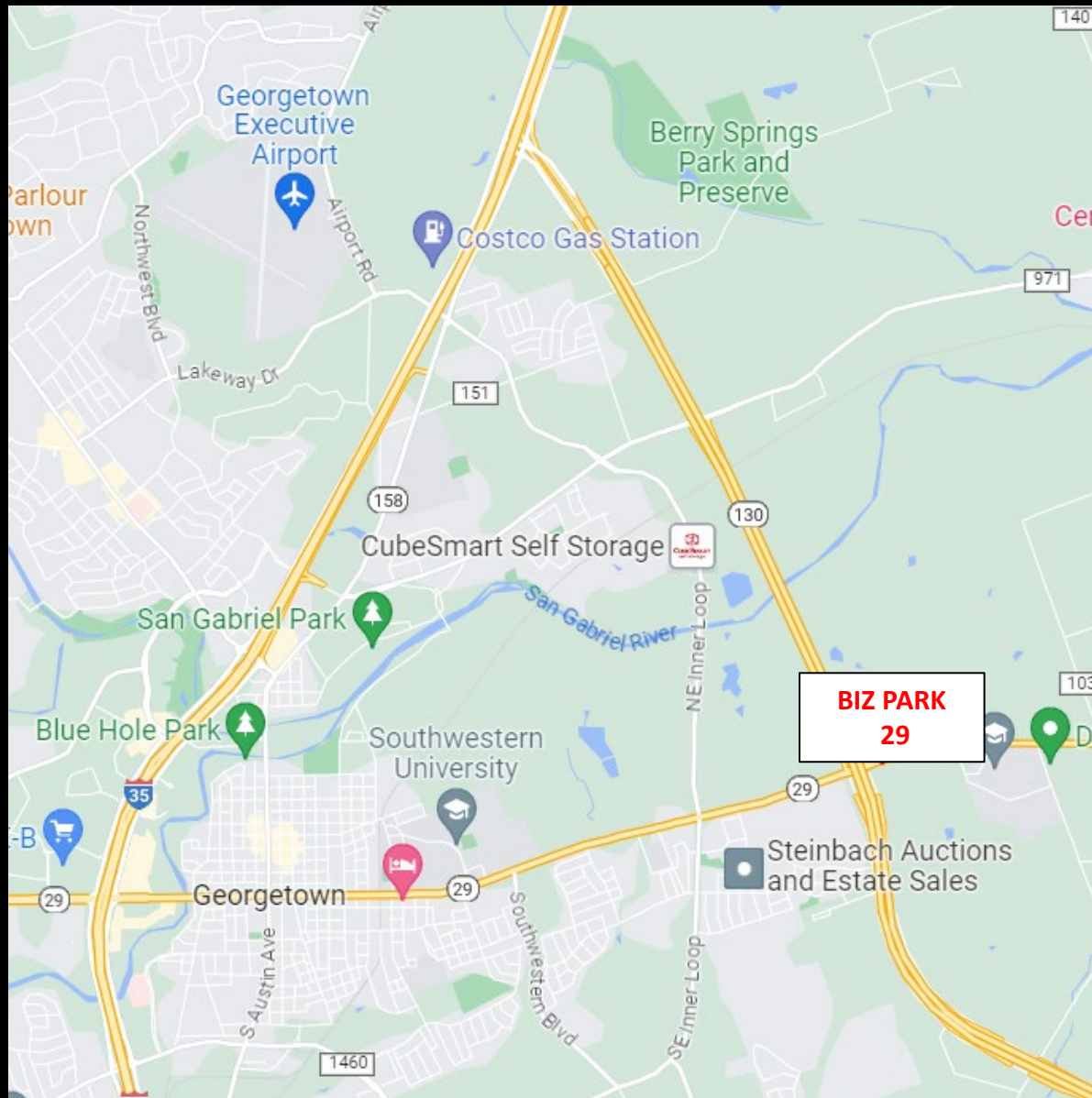
Building 11 | 3883 | 8300 SF Available | Approx 90% HVAC Office + Warehouse | 2 Overhead Doors

Building 12 | 3801 | 2450 SF Available | Shell

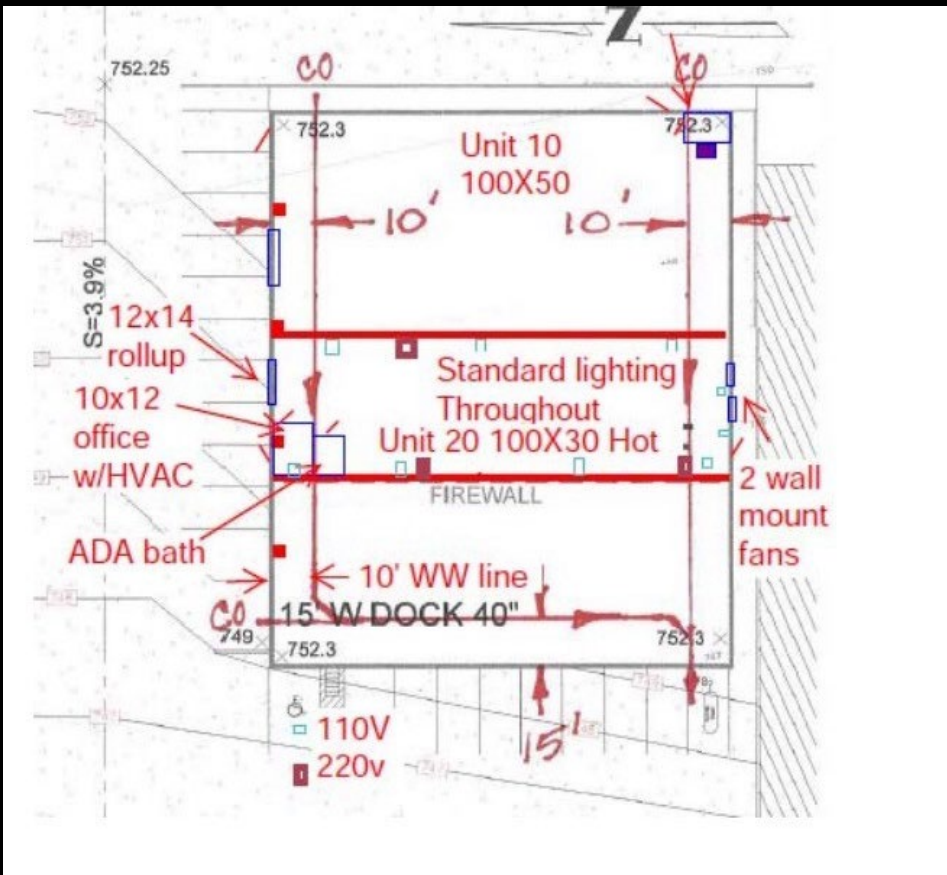
Building 12, S. 1273 | 3801 | 5000 SF Available | Approx 300 SF HVAC Office

Building 15 | 3801 | 1750 SF Available | No Overhead Door | Faces University (SH 29)

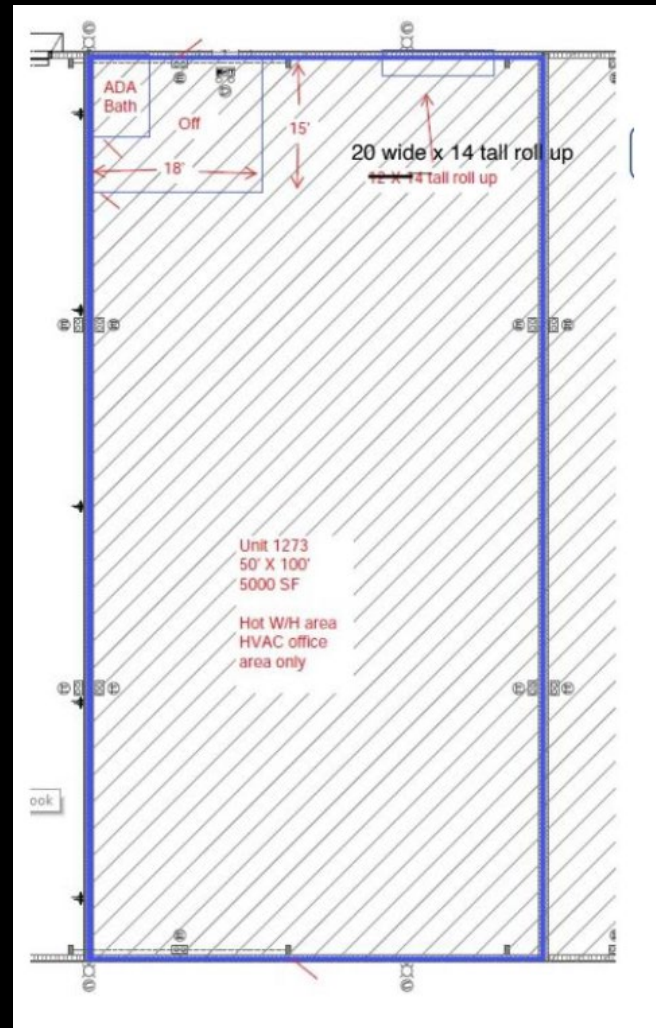
\$11 - \$12 PSF NNN



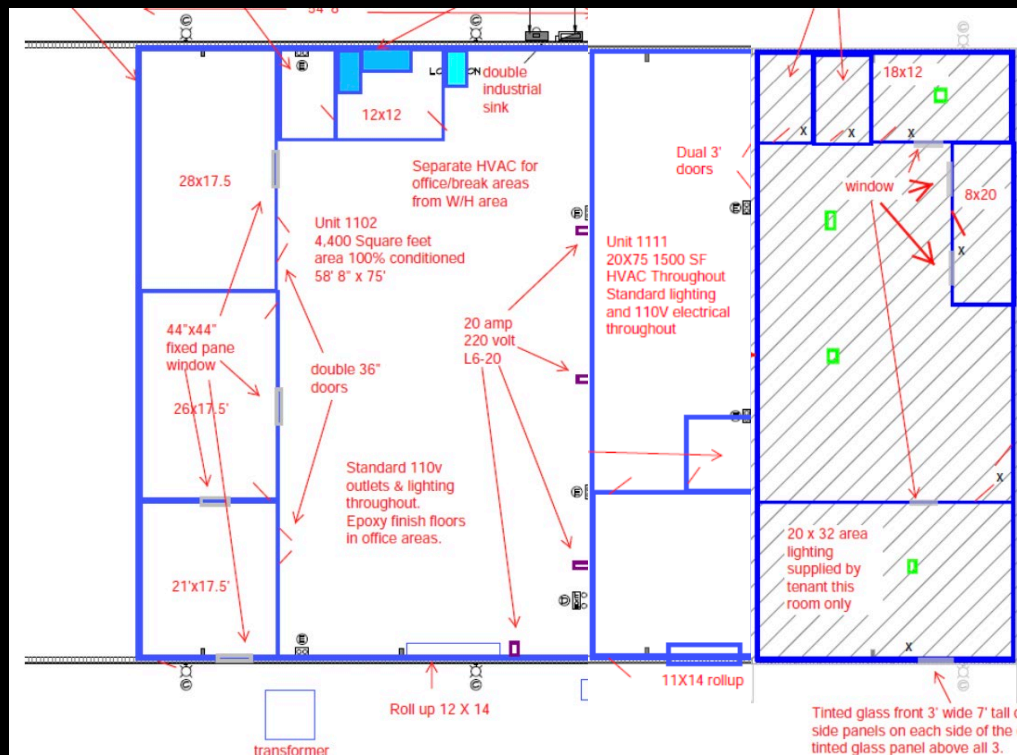
The information contained herein was obtained from sources deemed reliable; however, no guarantees, warranties or representations as to the completeness or accuracy thereof. The presentation of this real estate information is subject to errors; omissions; change of price; prior sale or lease; or withdrawal without notice.



**BLDG 15
SUITE 20**



**BLDG 12
SUITE 1273**



BLDG 11
8,300 SF