



ARENA
TOWER

A/
T



ARENA
TOWER

A/
T



ARENA
TOWER

A/
T



A/
T

ARENA
TOWER



A/
T

ARENA

TOWER



ARENA
TOWER



A/
T

ARENA

TOWER



ARENA
TOWER



A/
T

ARENA

TOWER

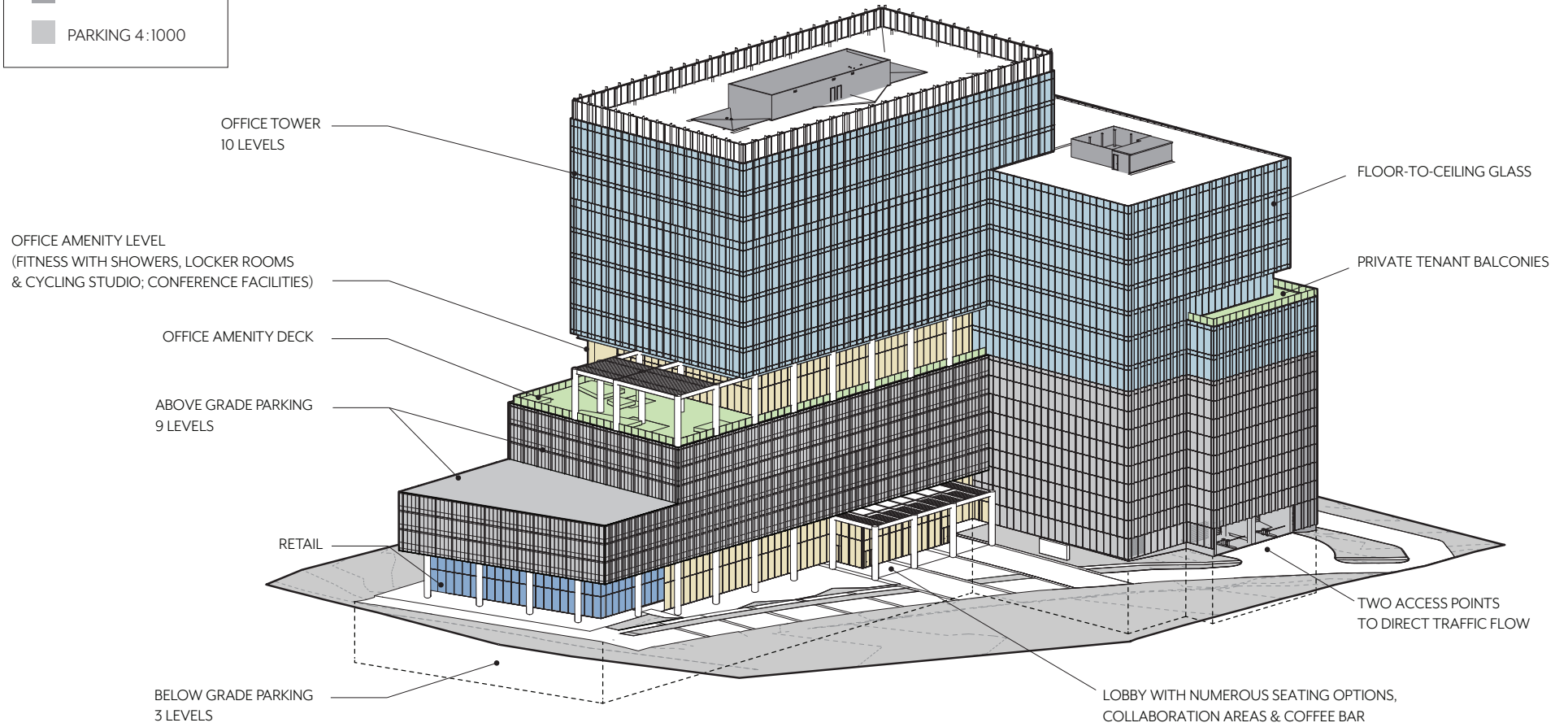


A/
T

ARENA

TOWER

- TERRACES
- OFFICE SPACE
- LOBBY/AMENITY
- RETAIL
- SERVICE
- PARKING 4:1000



ARENA

TOWER

PROPERTY DETAILS

TIMING:

- › Groundbreaking: 4Q 2019
- › Delivery: 1Q 2021

STRUCTURE:

- › 450,000 SF Class A office development
- › 10 levels of office on top of 9 levels of structured parking (3 levels below-grade parking, 9 levels above-grade parking)
- › 4:1000 parking ratio
- › Two access points to direct traffic flow
- › Retail on the ground floor
- › Generous parking and large floor plates (35,000 - 50,000 SF) are designed to maximize efficiency
- › Floor-to-ceiling glass

LOCATION:

- › Adjacent to MLS Soccer stadium (home to future Austin FC)
- › Located on Burnet Road, just south of Braker Lane and one block from The Domain

ON-SITE AMENITIES:

- › State-of-the-art amenity center on level 10 that spills out to a 7,500-sf sky terrace with vast views of the city
- › Outdoor terrace will wrap around the tenant lounge and provide an ideal spot for large company events
- › First-class fitness center with showers, locker rooms, cycling studio and outdoor yoga area that faces east and overlooks the new soccer stadium
- › Multiple conference facilities (ability to seat 25-200+ people)
- › Lobby will have hospitality feel with numerous seating options and collaboration areas
- › Lobby will feature sizeable coffee bar that opens to the outdoor seating at the front of the building
- › Security desk and large, digital screen that can be used for watching games or hosting company announcements



ARENA
TOWER

FOR MORE INFO, CONTACT:

Ben Tolson
512.684.3819
tolson@aquilacommercial.com

Bethany Perez
512.684.3813
perez@aquilacommercial.com

Bart Matheney
512.684.3808
matheney@aquilacommercial.com